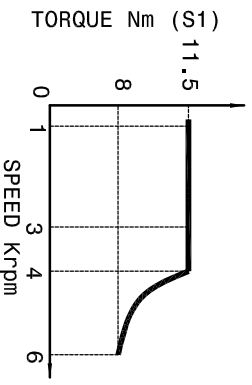
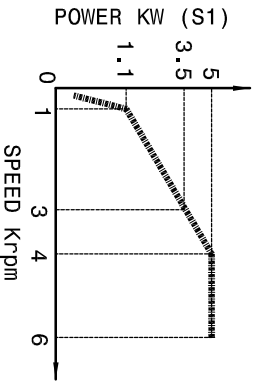
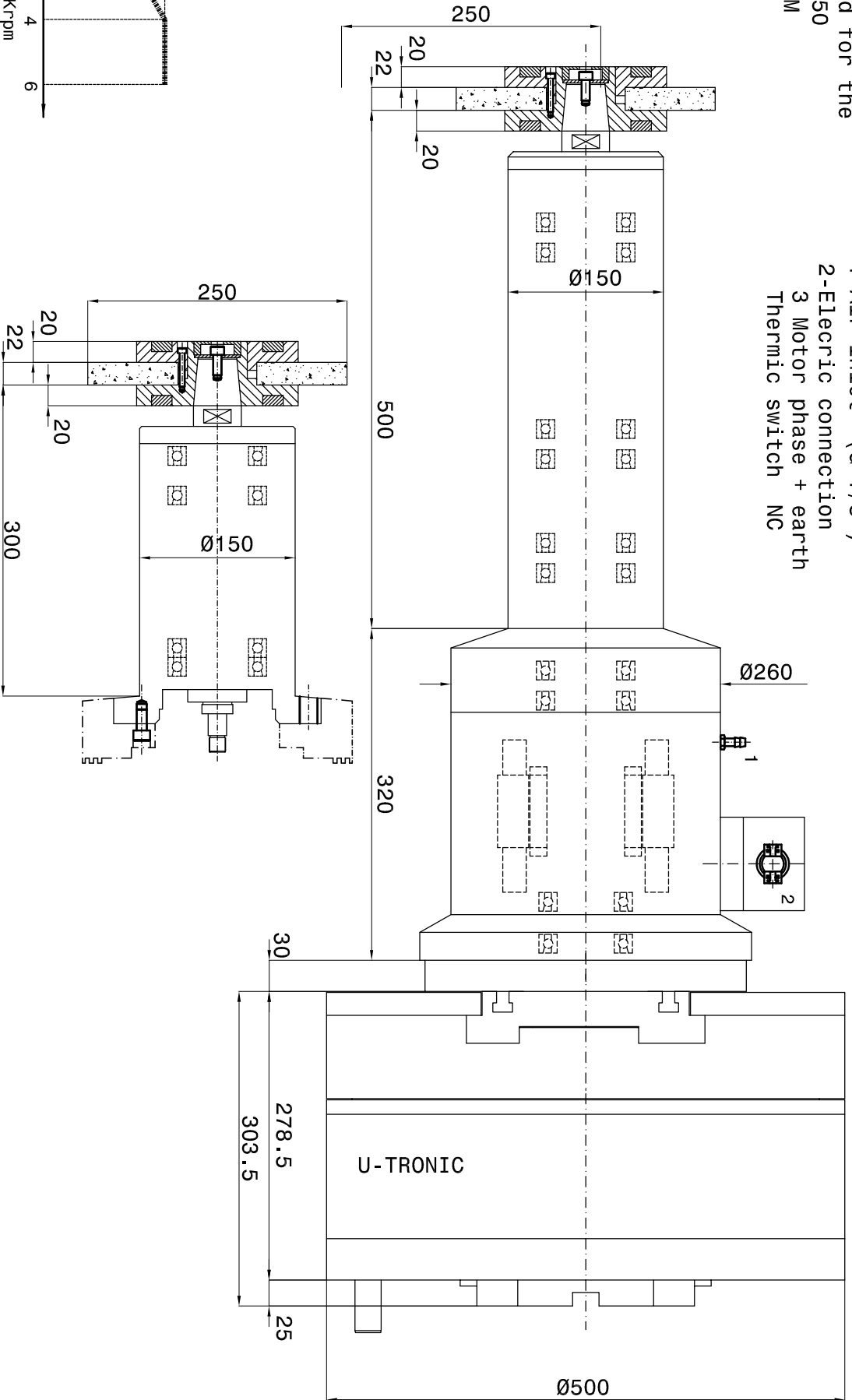
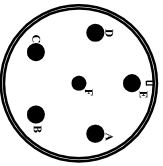


Speed max. 6000 RPM  
Suggested speed for the  
grindstone Ø 250  
araund 3000 RPM

- 1-Air inlet (G 1/8")
- 2-Electric connection
- 3 Motor phase + earth  
Thermic switch NC



SPEED	RPM	1000	3000	4000	6000
FREQUENCY	Hz	36	100	140	200
POWER (S1)	Kw	1.1	3.6	5	5
TORQUE (S1)	Nm	11.5	11.5	11.5	8
TENSION	V	91	251	350	350
CURRENT	A	13	13	13	12



A brown phase U  
B blue phase V  
C black phase W  
D yellow-green Earth  
E not connected  
F not connected

Weight electrospindle + wheel holderextension 150 Kg

Motor : 4 pole

Runout taper 0.002mm



SUBJECT: PS JG-10  
CUSTOMER:

Sheet: 1/1 | Dwg. n°: 401-00

DATE : 18/04/2008