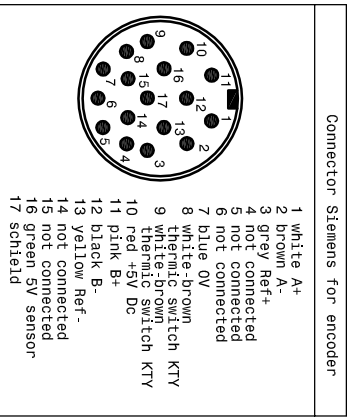
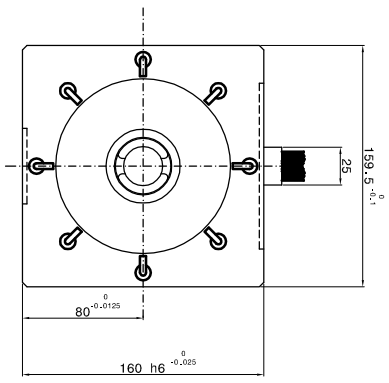
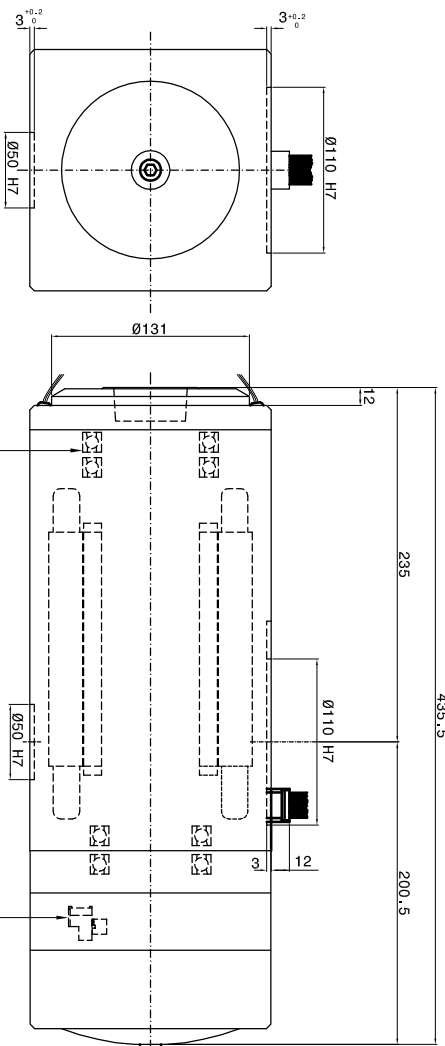


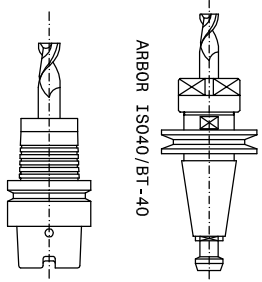
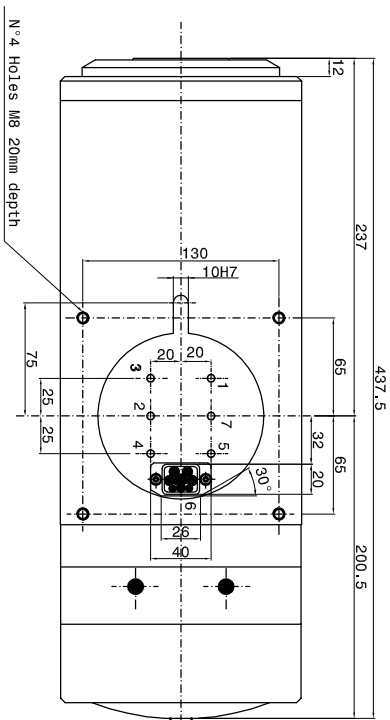
Motor number of Pole : 6 pole

SPEED	RPm	6000	12000	20000	24000
FREQUENCY	HZ	100	300	600	1000
POWER (S1)	KW	5.5	18	24	24
TORQUE (S1)	Nm	28.5	28.5	19	11
TENSION	V	78	181	380	380
CURRENT	A	93	93	75	58
					54



- 1 white A+
- 2 brown A-
- 3 grey Ref+
- 4 not connected
- 5 not connected
- 6 not connected
- 7 blue 0V
- 8 white-brown thermic switch KTY
- 9 white-brown thermic switch KTY
- 10 red +5V Dc
- 11 pink B+
- 12 black B-
- 13 yellow Ref-
- 14 not connected
- 15 not connected
- 16 green 5V sensor
- 17 shield

- 1 - Coolant inlet (Ø5)
- 2 - Coolant outlet (Ø5)
- 3 - Continuous inlet filtered air 0.5 MICRON for pressurization (1-1.5 bar MAX) Ø5
- 4 - Inlet air arbor's cleaning (6 bar) (please use only and exclusively with released tool and piston under pressure. The electrospindle cannot turn. (Ø5))
- 5 - Inlet oil tool change (50 bar) (to be used only with arrested electrospindle) Ø5
- 6 - Electric connection
 - 3Phases motor-Earth
 - Motor thermic switch (N°2 KTY) -(N°1 NC)
 - Outlet sensor's cables (S1-S2-S4)
 - S1 = Tool's arbor clamped,
 - S2 = Piston under pressure ready to receive tools arbor
 - The electrospindle can not turn.
 - S4 = Tool's arbor not clamped
 - The electrospindle cannot turn.
- 7 - Tool cooling (Ø5)



Runout taper 0.002mm

Grease bearings Lubrication



SHEET :1/1
Dwg. N°502-00

SUBJECT : PS-ES-2
CUSTOMER :

DATE :