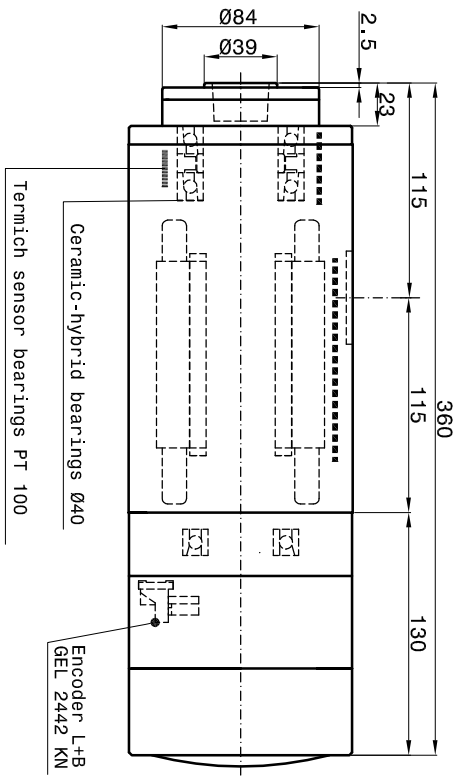
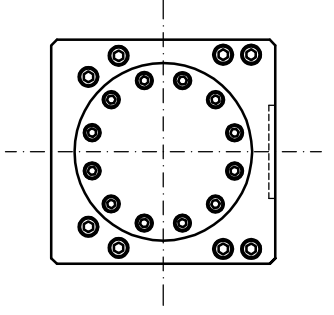
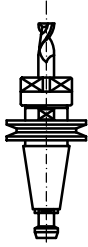


**ARBOR ISO30**



**ARBOR HSK-E40**



- 1 - Coolant inlet (Ø5)
- 2 - Coolant outlet (Ø5)
- 3 - Electric connection 3Phases motor-Earth

Motor thermich switch (N°2 KTY) - (N°1 NC)

- Outlet sensor's cables (S1-S2-S4)

S1 = Tool's arbor clamped.

S2 = Piston under pressure ready to receive tools arbor

The electrospindle can not turn.

S4 = Tool's arbor not clamped

The electrospindle can not turn.

- Outlet encoder's cables (L+B GEL 2442 KN)

- Ternich sensor bearings

- 4 - Continuous inlet filtered air 0.5 MICRON for pressurization (1-1.5 bar MAX) (Ø5)

- 6 - Inlet air arbor's cleaning (6 bar) (Ø5) (please use only and exclusively with released tool and piston under pressure

The electrospindle cannot tur.

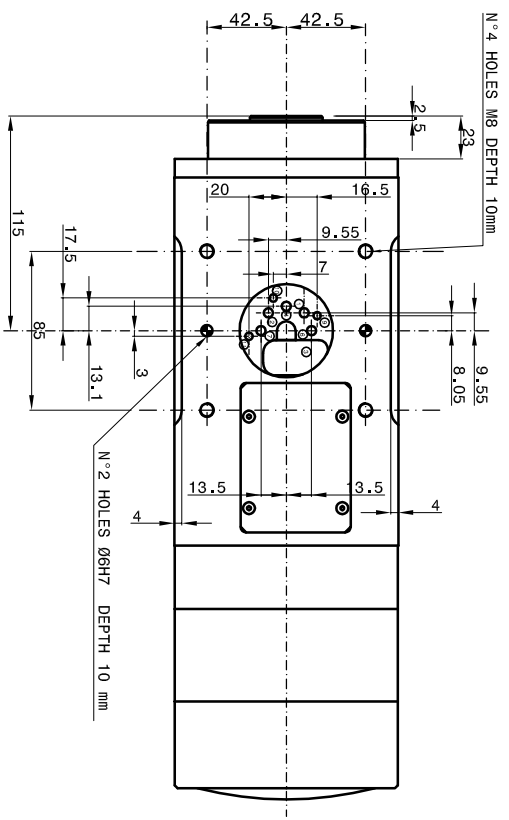
The electrospindle cannot tur.

- 7 - Inlet oil tool change (50 bar) (to be used only with arrested electrospindle) (Ø5)

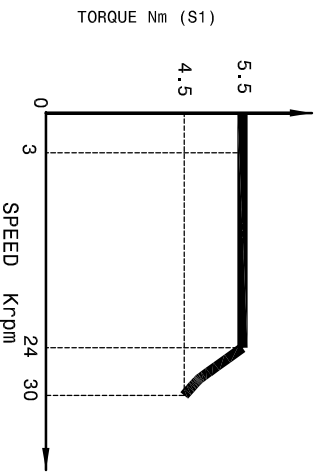
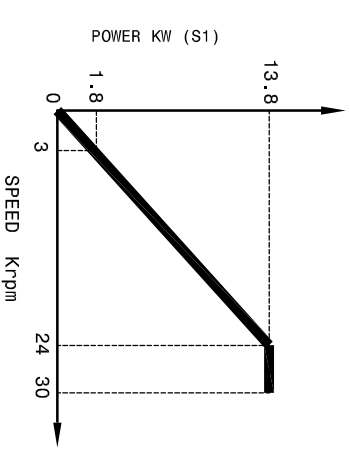
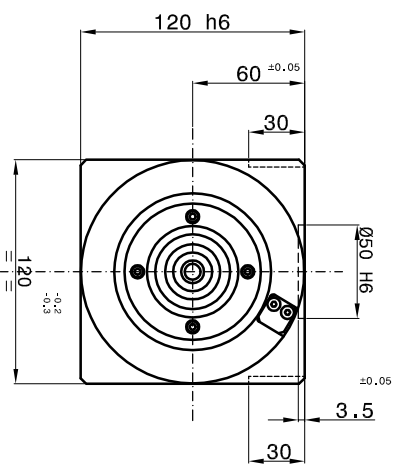
- 9 - Front bearings Lubrication 1 (Ø4)

- 10 - Front bearings Lubrication 2 (Ø4)

- 11 - Rear bearings Lubrication 1 (Ø4)




SPEED	RPM	3000	24000	30000
FREQUENCY	Hz	100	800	1000
POWER (S1)	KW	1.8	13.8	13.8
TORQUE (S1)	Nm	5.5	5.5	4.5
TENSION	V	51	380	380
CURRENT	A	36	35	30



Motor 4 pole

Runout taper 0.002mm



SHEET :1/1

Dwg.

**SUBJECT : PS-ES-1**

**CUSTOMER :**

DATE :