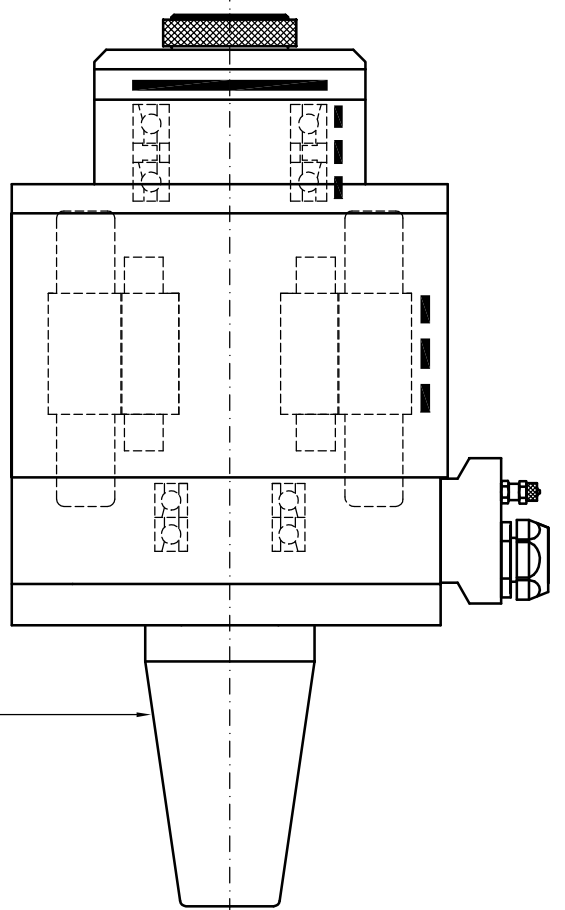
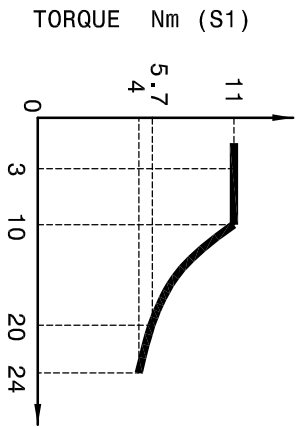


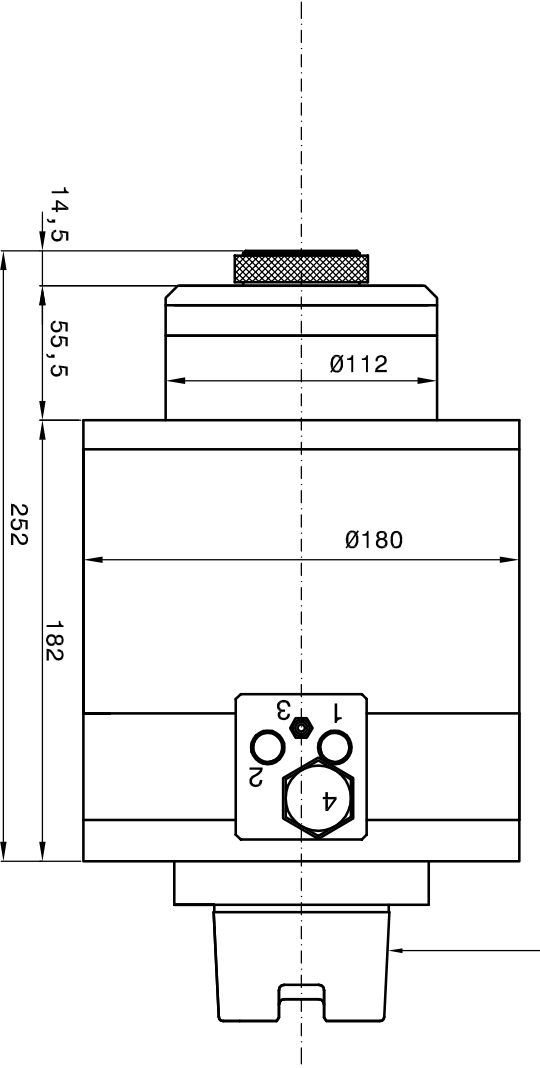
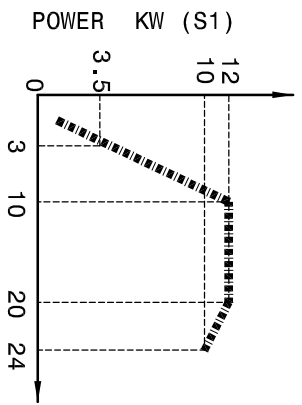
HSK C 50 DIN 69893



ARBOR ISO DIN 69871



MAX CURRENT 31 A - 380 V

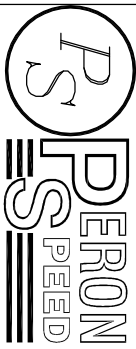


ARBOR HSK A/E DIN 69893

WEIGHT : Kg 27

- 1-LIQUID INLET (G 1/8")
- 2-LIQUID OUTLER (G 1/8")
- 3-FRONT PRESSURIZATION (M6)
- 4-ELECTRIC CONNECTION
- 3 MOTOR PHASE + EARTH
- THERMIC SWITCH NC

Runout arbor 0.002mm



SUBJECT: A7
CUSTOMER:

Sheet: 1/1 Dwg. N°: 186-A7

DATE : 10/04/2007