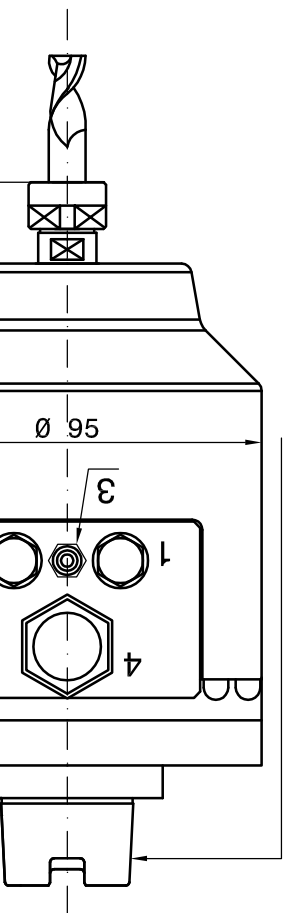


MAX CURRENT 5 A - 220 V



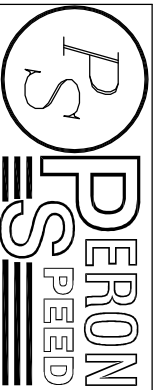
ARBOR HSK A/E DIN 69893



- 1-LIQUID INLET (G 1/8")
- 2-LIQUID OUTLER (G 1/8")
- 3-FRONT PRESSURIZATION (M6)
- 4-ELECTRIC CONNECTION
- 3 MOTOR PHASE + EARTH
- THERMIC SWITCH NC

WEIGHT : Kg 3.5

Runout arbor 0.002mm



SUBJECT : A1
CUSTOMER :

SHEET : 1/1

DATE : 02/03/2006